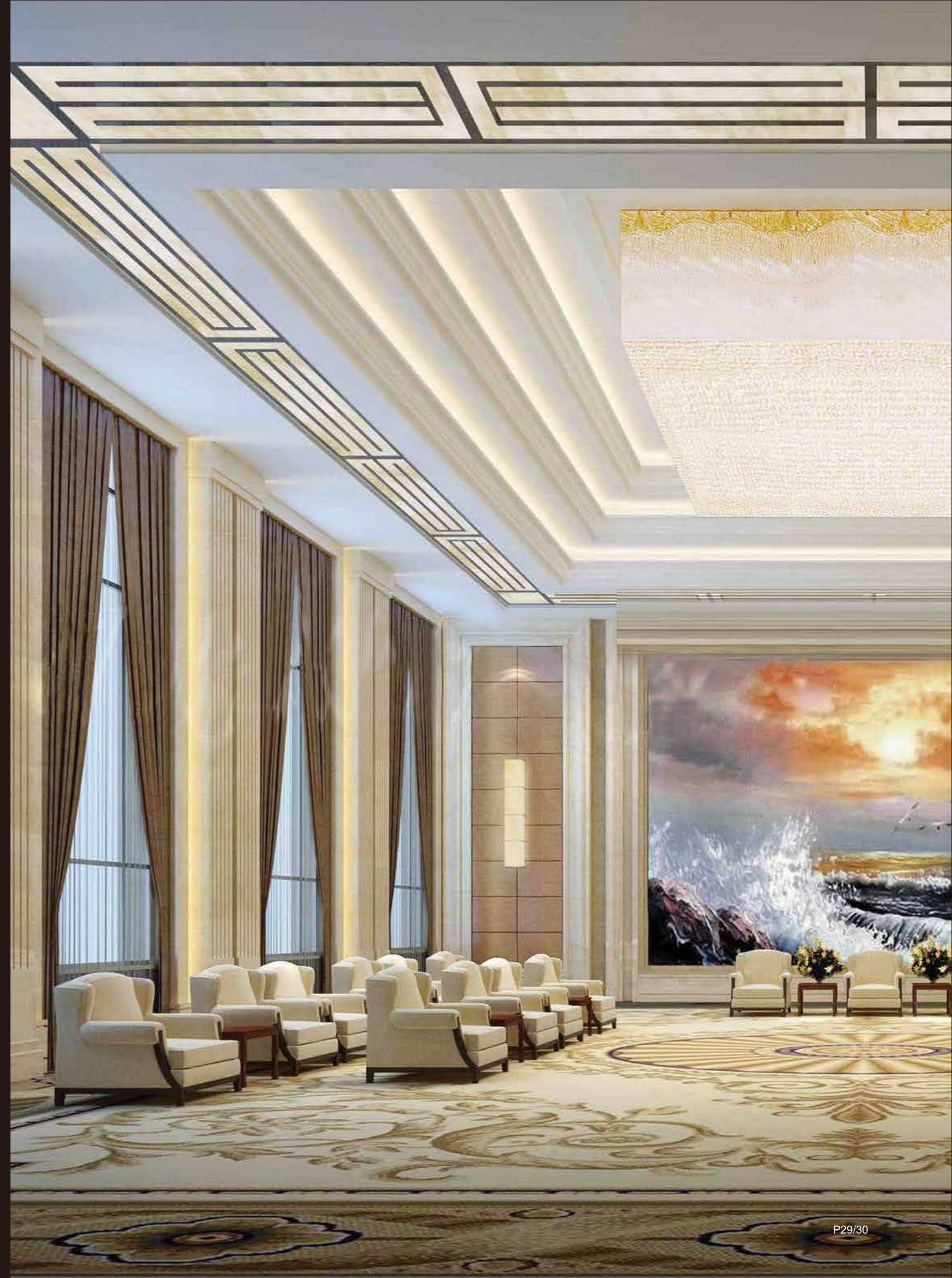


**Motorization Solutions**  
Indoor Motorized Shades System







Meeting room



House

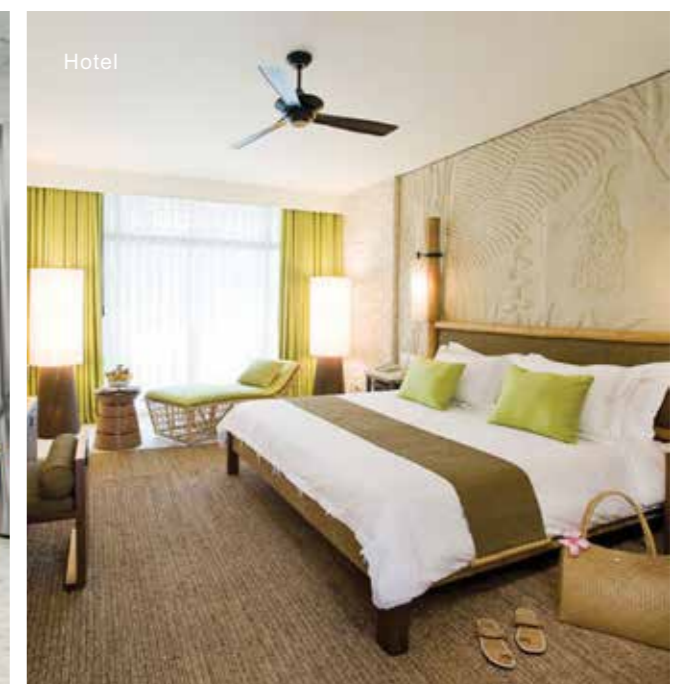
A-OK motorized curtain system is widely applied in Hotels, villas, meeting Room etc.

## Motorized Curtain Motor

Motorized curtain is a new generation product of manual fabric curtains, it is normally applied to large size Window, with exquisite craft and elegant appearance, it becomes the best fashionable choice for hotels, meeting rooms, business center and modern homes. A-OK motorized curtain system has powerful functions, including automatic limit setting, soft start and soft stop, speed adjustable etc. It has won a number of patents. It is not only a solution for sun shading, thermal insulation, glare or privacy, but also to create a relax, comfortable and convenient room to stay.



Villa



Hotel

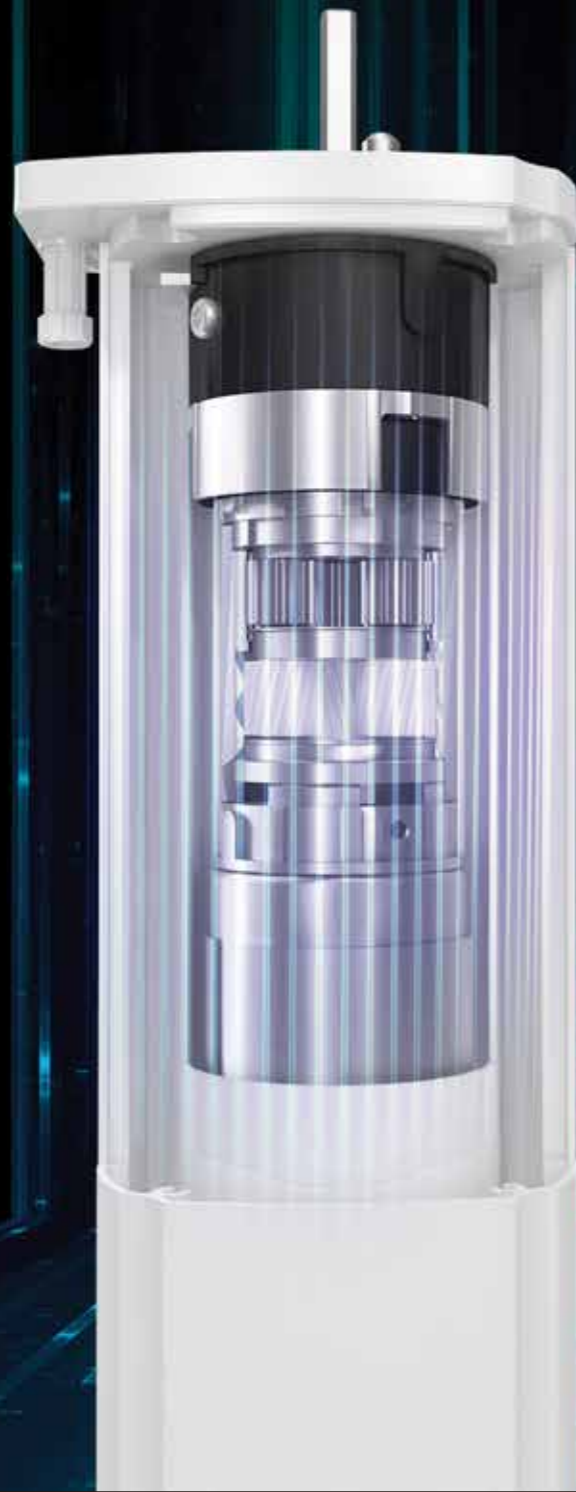


# AM75

## Quieter and Stronger

Using our new generation helical gearbox design, AM75 is with stronger power and much quieter noisy, we A-OK team always pursue to improve better and better.

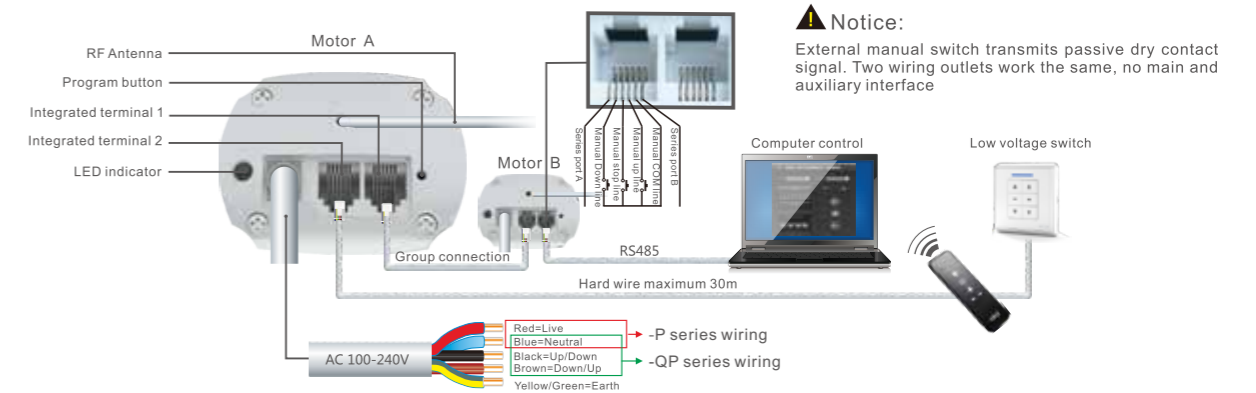




## AM75 Quiet Curtain Motor

AM75 quiet curtain motor comes from the perfect combination between German technology and Chinese culture. It has some outstanding features like nice outlook, wide voltage power supply, group control, stop by blocked etc.

### wiring instructions



### Parameters

Products Name	Model	Rated Torque	Speed	Motor size	Rated Voltage	Rated power	IP class	Functions	
AC100-240V Flexible heavy duty motor	AM75-1.5/100-EM-P	1.5N.m	16cm/s	316x68x53mm (L) (W) (H)	AC100-240V 50/60Hz	65W	IP20	<input checked="" type="checkbox"/> Speed adjustable	<input checked="" type="checkbox"/> Group control
AC Line Switching quiet motor	AM75-1.5/100-EM-QP							<input checked="" type="checkbox"/> Stop on block	<input checked="" type="checkbox"/> Manual Switch function
AC Five wires quiet motor	AM75-1.5/100-EM-GP							<input checked="" type="checkbox"/> Various control options	<input checked="" type="checkbox"/> Memory function
								<input checked="" type="checkbox"/> Touch motion	<input checked="" type="checkbox"/> Flexible super silent design
								<input checked="" type="checkbox"/> Wide Voltage power supply	<input checked="" type="checkbox"/> Fabric rebound journey correction
								<input checked="" type="checkbox"/> High voltage control	<input checked="" type="checkbox"/> Third limit position

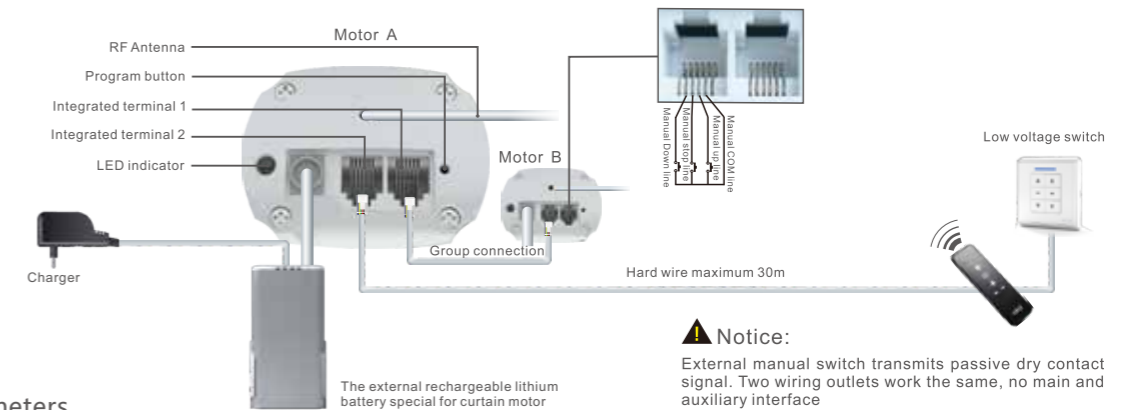


AC702-01

## AM75 External Battery Curtain Motor

External Battery Curtain Motor comes from the perfect combination between German technology and Chinese culture. It has some outstanding features like nice outlook, wide voltage power supply ,group control, stop by blocked etc.

### wiring instructions



### Parameters

Products Name	Model	Rated Torque	Speed	Motor size	Rated Voltage	Rated power	IP class	Functions
AC100V-240V Flexible quiet motor	AM75-1/100-ES	1N.m	16cm/s	316x68x53mm (L) (W) (H)	DC14.8V	65W	IP20	<input checked="" type="checkbox"/> Speed adjustable <input checked="" type="checkbox"/> Manual Switch function <input checked="" type="checkbox"/> Touch motion <input checked="" type="checkbox"/> Wide Voltage power supply <input checked="" type="checkbox"/> Group control <input checked="" type="checkbox"/> Various control options <input checked="" type="checkbox"/> Flexible super silent design <input checked="" type="checkbox"/> Fabric rebound journey correction <input checked="" type="checkbox"/> Stop on block <input checked="" type="checkbox"/> Memory function <input checked="" type="checkbox"/> High voltage control <input checked="" type="checkbox"/> Third limit position

Products Name	Model	Product Dimension	Output Voltage	Battery capacity	Voltage of charging	Max Current	Working temp
Lithium Battery	AC702-01	165x85x23mm	DC14.8V	5200mAH	16.8V	4A	-10°C



# AM70

## Motorized clothes rack drive



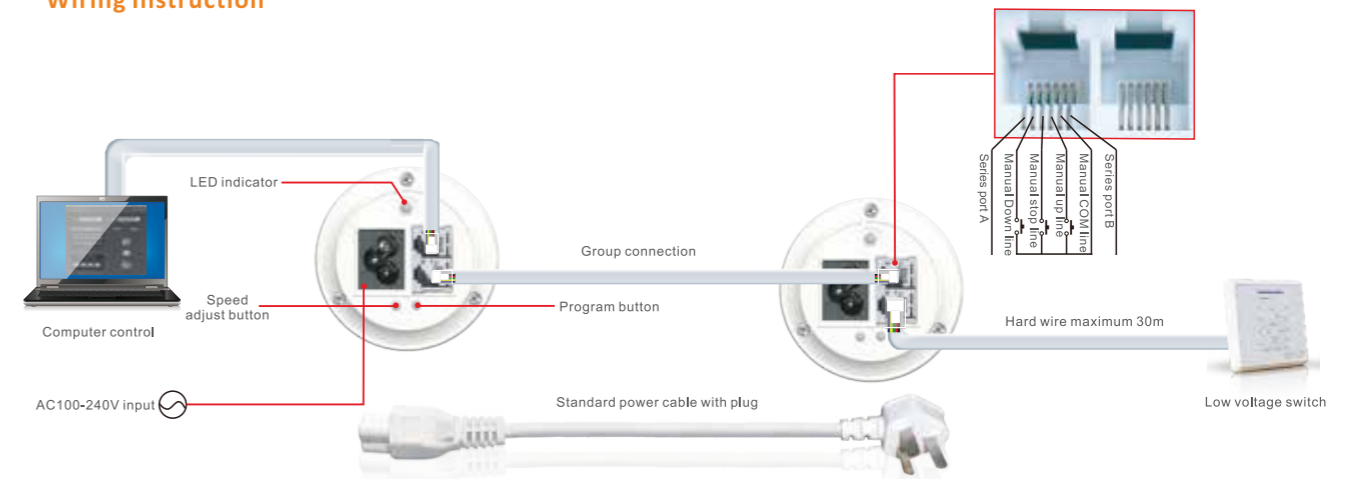
AM70 quiet curtain motor, shaped with full and round minimal design, widely applied for the hotels, villas, home and office etc.

### Features

- ❖ The motor could install on top and down two directions according to your applications.
- ❖ The motor applies three patented silent technologies. Operation noise low to 30dB.
- ❖ Curtain track use special electrophoresis surface treatment. Ensure the synchronous toothed belt runs smoothly inside the track.
- ❖ Each gear box adopts double rolling bearing structure. Ensure the whole system driving steady and silent.
- ❖ Concealed design for ceiling bracket. 304 stainless metal materials are highly anti-rust.

## Motorized Curtain | Indoor motorized sun shades solution

### Wiring Instruction

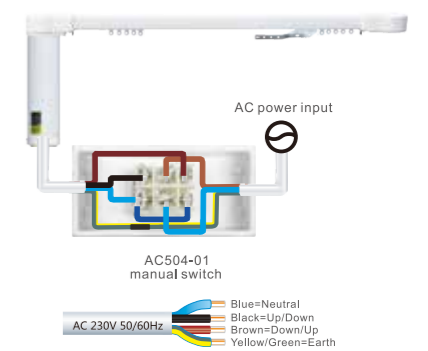


Wiring diagram for AC plug-in curtain motors (AM70-1/100-EQ-P/AM70-2/80-EM-P)

#### Solution 1:



#### Solution 2:



Wiring diagram for AC line switching curtain motors (AM70-1/100-EQ-QP/AM70-2/80-EM-QP)

### Notice:

External manual switch transmits passive dry contact signal. Two wiring outlets work the same, no main and auxiliary interface

### Parameters

Products Name	Model	Rated Torque	Speed	Motor size	Rated Voltage	Rated power	IP class	Functions	
AC Flexible quiet motor	AM70-1/100-EQ-P	1N.m	16cm/s	Φ72.5×281.5(L)mm	AC100-240V 50/60Hz	96W	IP20	<input checked="" type="checkbox"/> Speed adjustable	<input checked="" type="checkbox"/> Group control
	AM70-2/80-EM-P	2N.m	12cm/s			72W		<input checked="" type="checkbox"/> Stop on block	<input checked="" type="checkbox"/> Manual Switch function
AC Line Switching flexible quiet motor	AM70-1/100-EQ-QP	1N.m	16cm/s			96W		<input checked="" type="checkbox"/> Various control options	<input checked="" type="checkbox"/> Memory function
	AM70-2/80-EM-QP	2N.m	12cm/s			72W		<input checked="" type="checkbox"/> Touch motion	<input checked="" type="checkbox"/> Flexible super silent design

# AM95

## Magnetic levitation curtain motor

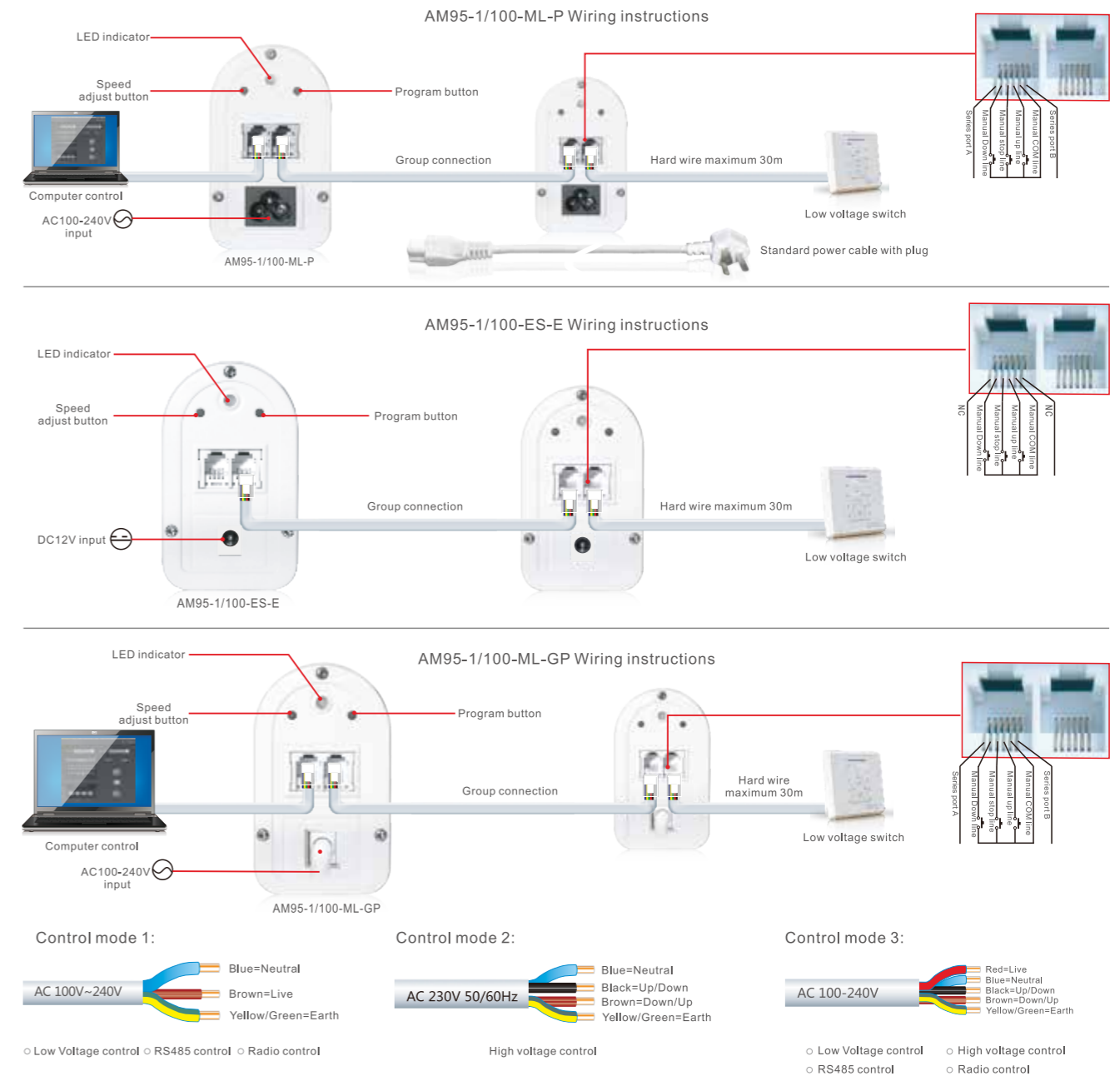


A-OK flexible quiet curtain motor, was inspired by Germany Mercedes-Benz auto engine and vehicle suspension technology, was designed by a master of industrial design. You'll have excellent serene enjoyment due to its unparalleled silent running. All important component toolings and manufacturing technique originate from Toyota's score suppliers. It takes three years to carefully design and manufacture; This product won a number of patents.

### Features

- ❖ The motor could install on up and down two directions according to your applications.
- ❖ Each gear box adopts double rolling bearing structure. Ensure the whole system driving steady and silent.
- ❖ The motor applies three patented silent technologies. Operation noise low to 30dB.
- ❖ Concealed design for ceiling bracket. 304 stainless metal materials are highly anti-rust.
- ❖ Curtain track use special electrophoresis surface treatment. Ensure the synchronous toothed belt runs smoothly inside the track.

### Wiring Instruction



**Notice:** External manual switch transmits passive dry contact signal. Two wiring outlets work the same, no main and auxiliary interface

### Parameters

Products Name	Model	Rated Torque	Speed	Motor size	Rated Voltage	Rated power	IP class	Functions
AC Magnetic levitation motor	AM95-1/100-ML-P	1N.m	16cm/s	215.5×95×56mm (L) (W) (H)	AC100-240V 50/60Hz	96W	IP20	<input checked="" type="checkbox"/> Speed adjustable <input checked="" type="checkbox"/> Group control <input checked="" type="checkbox"/> Stop on block <input checked="" type="checkbox"/> Manual Switch function <input checked="" type="checkbox"/> Various control options <input checked="" type="checkbox"/> Memory function <input checked="" type="checkbox"/> Touch motion <input checked="" type="checkbox"/> Flexible super silent design <input checked="" type="checkbox"/> Wide Voltage power supply <input checked="" type="checkbox"/> Fabric rebound journey correction <input checked="" type="checkbox"/> High voltage control
AC Five wires control magnetic levitation motor	AM95-1/100-ES-E				DC12V	72W		
Built-in battery magnetic levitation motor	AM95-1/100-ML-GP				AC100-240V 50/60Hz	96W		



# AM68 Quiet Curtain Motor

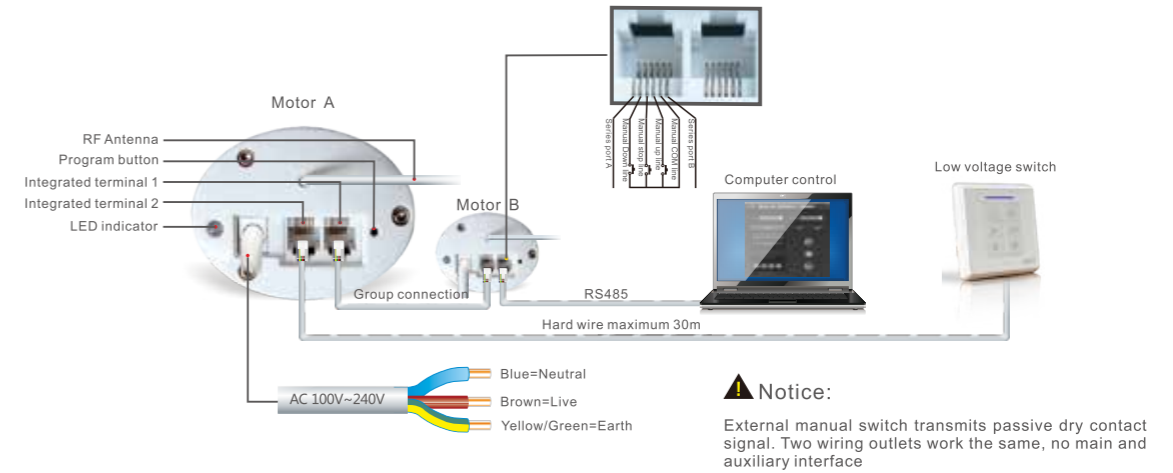


## Features

Products Name	Model	Rated Torque	Speed	Motor size	Rated Voltage	Rated power	IP class	Functions
Curtain motor with external rechargeable battery	AM68-1/100-ES	1N.m	16cm/s	281×68×53mm (L) (W) (H)	DC14.8V	65W		
AC 4-wire curtain motor	AM68-1.5/100-EM-QP	1.5N.m	16cm/s	316×68×53mm (L) (W) (H)	AC100-240V 50/60Hz	65W	IP20	<input checked="" type="checkbox"/> Speed adjustable <input checked="" type="checkbox"/> Group control <input checked="" type="checkbox"/> Stop on block <input checked="" type="checkbox"/> Manual Switch function <input checked="" type="checkbox"/> Various control options <input checked="" type="checkbox"/> Memory function <input checked="" type="checkbox"/> Touch motion <input checked="" type="checkbox"/> Flexible super silent design <input checked="" type="checkbox"/> Wide Voltage power supply <input checked="" type="checkbox"/> Fabric rebound journey correction <input checked="" type="checkbox"/> High voltage control <input checked="" type="checkbox"/> Third limit position
AC 3-Wire curtain motor	AM68-1.5/100-EM-P	1.5N.m	16cm/s			65W		
AC 5-wire curtain motor	AM68-1.5/80-EM-GP	1.5N.m	12cm/s			65W		
WiFi quiet curtain motor	AM68-1/80-EQ-PW	1N.m	12cm/s			80W		
AC100-240V quiet motor	AM68-1/100-EQ-P	1N.m	16cm/s			80W		
AC100-240V Flexible heavy duty motor	AM68-2/80-EM-P	2N.m	12cm/s			65W		
AC Roof curtain motor	AM68-2/80-EC-P	2N.m	12cm/s			65W		
AC Line Switching quiet motor	AM68-2/80-EM-QP	2N.m	12cm/s			65W		
AC Five wires quiet motor	AM68-1/100-EQ-GP	1N.m	16cm/s			80W		
AC Five wires flexible heavy duty motor	AM68-2/80-EM-GP	2N.m	16cm/s			65W		

## Motorized Curtain | Indoor motorized sun shades solution

### Wiring instructions

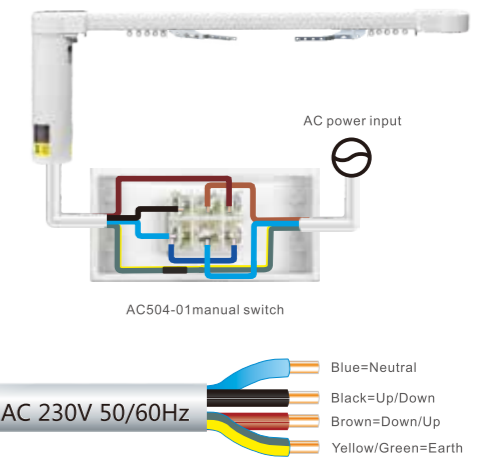


AM68-1/100-EQ-P AM68-2/80-EM-P AM68-2/80-EC-P Wiring instructions

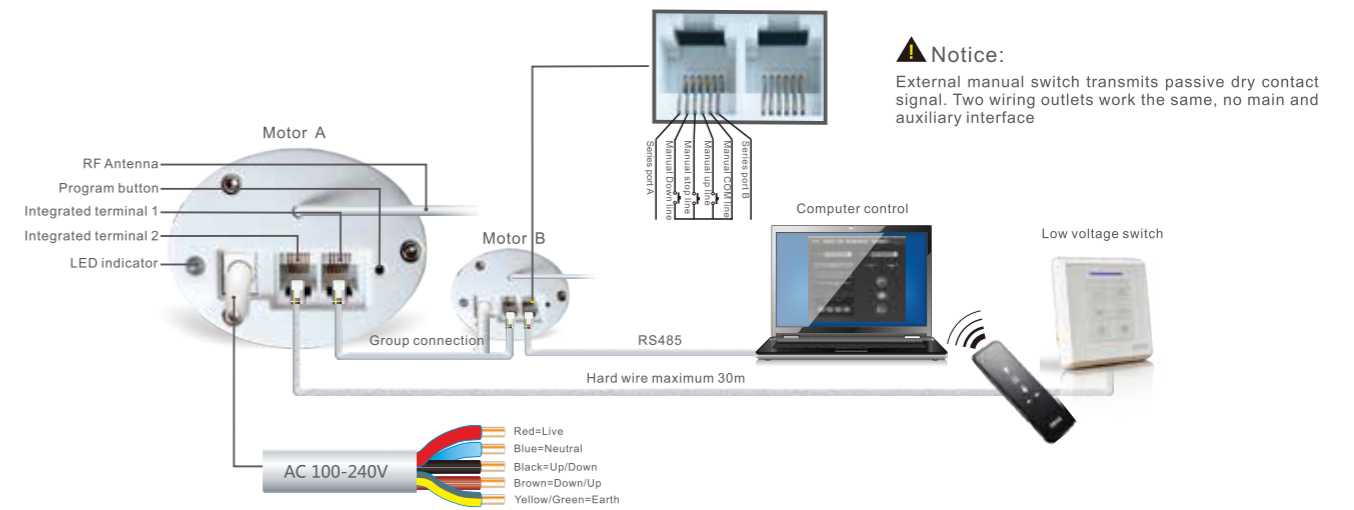
### Solution 1:



### Solution 2:

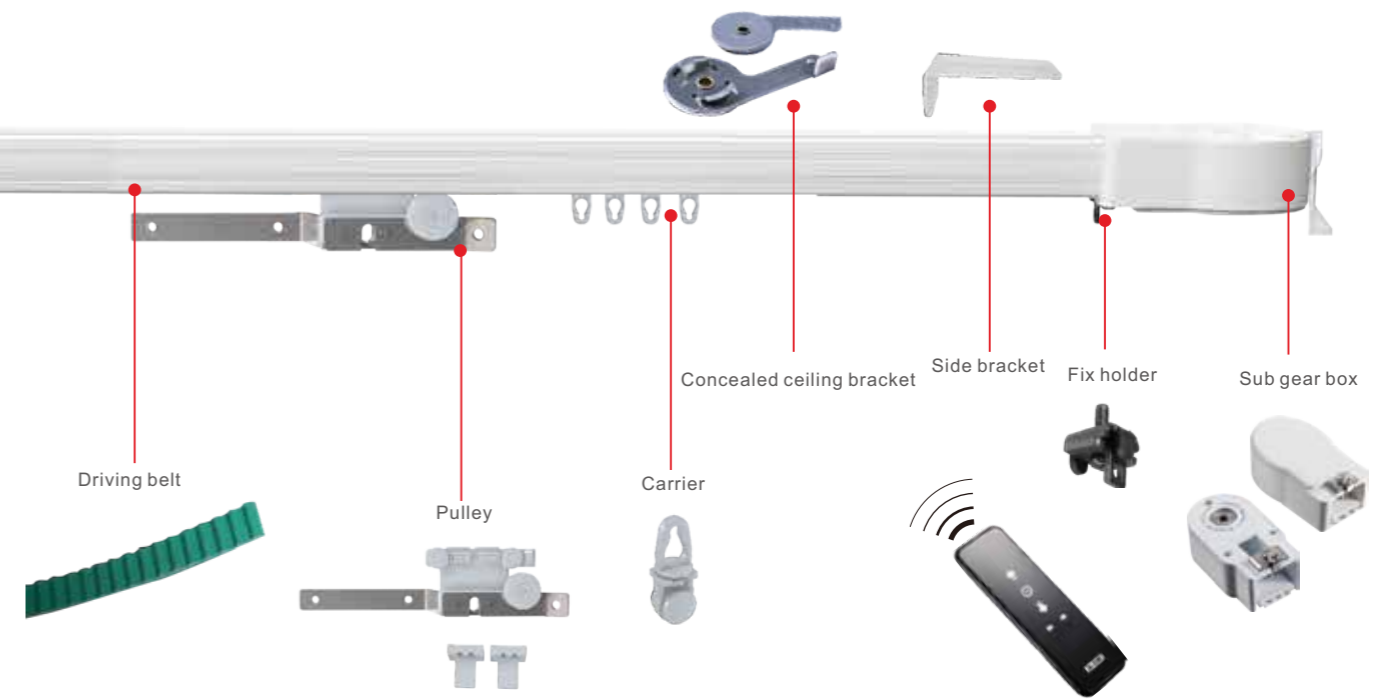
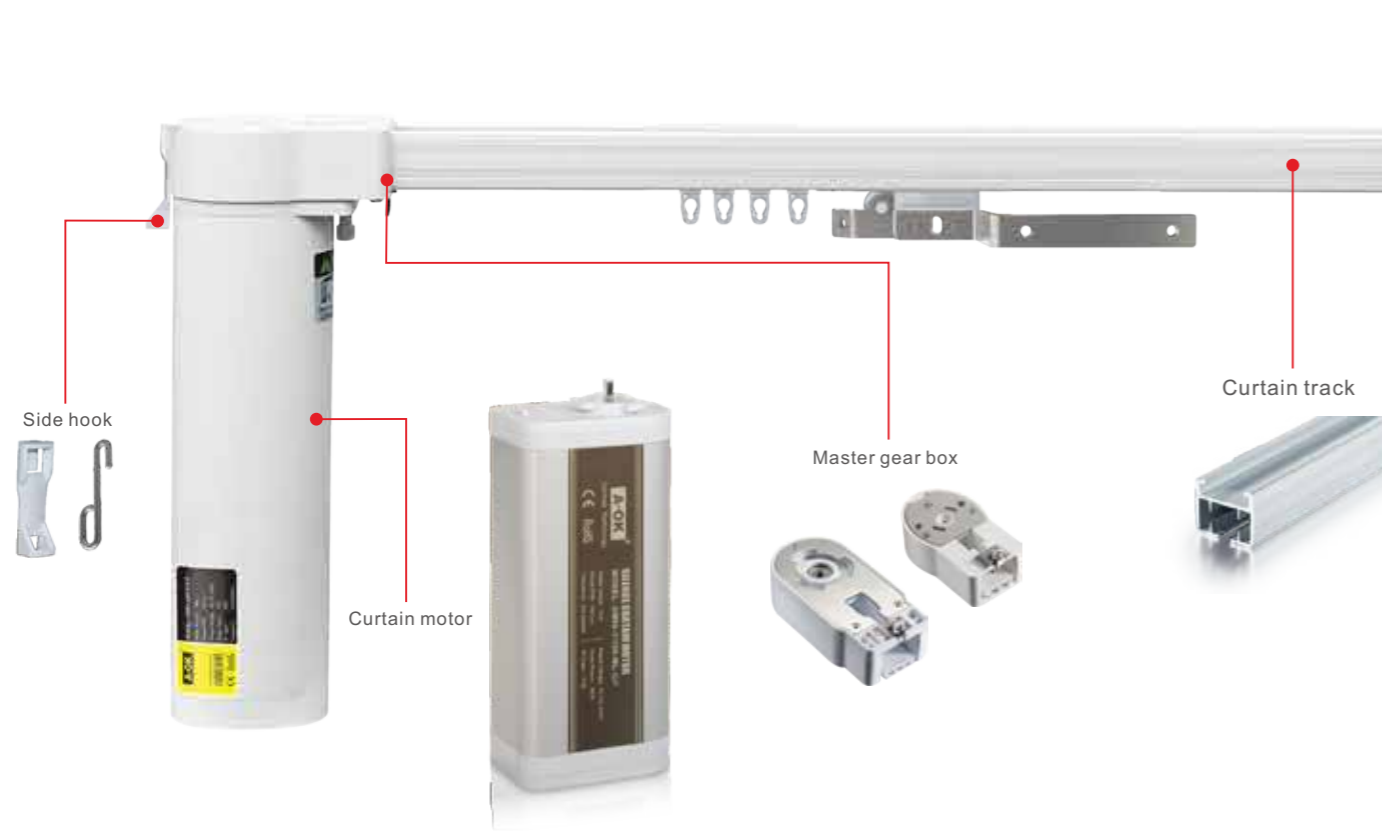


AM68-2/80-EM-QP wiring instructions



AM68-1/100-EQ-GP Wiring instructions





**Features**



**Flexible, super silent design**  
The motor applies 3 patented silent technologies, operation noise is low to 30dB. Intelligent soft start and soft stop function enhanced the performance of quiet and flexible.



**Manual Switch function**  
You could open or close the curtain manually on outage.



**Touch motion**  
Slightly drag the fabric to one direction by 5cm while the motor is energized, the motor will open or close automatically.



**Stop on block**  
When the fabric meeting any physical block, the curtain will stop automatically to protect the whole system.



**Group control**  
The motor has RS485/232 interface, it could be connected to a group controller, computer or dry contact switch.



**Memory function**  
Automatically set and memory the stop position, it will slow down when the fabric approaching the stop position to protect the whole system and keep quiet.



**Fabric rebound journey correction**  
When the fabric rebound a little due to compression, the motor will memory the position as the new limit position automatically. The curtain looks natural and more beautiful.



**Third limit position**  
Besides the running journey limit position, you could also set the third limit position anywhere within the journey. Manage the natural light according to your personal preference. Create a comfortable living environment to live.



**Speed Adjustable**  
The motor has a speed adjustment button; you could adjust the running speed according to your application.



**Various control options**  
You could choose wireless, wired or RS232/485 communication according to your actual use; wide range of application.

**Curtain motor Specification**

Product Series	Product name	Model	Rated Torque	Speed	Motor Size	Rated Power	Functions
AM95 magnetic levitation series	AC Magnetic levitation motor	AM95-1/100-ML-P	1N.m	16cm/s	215.5×95×56mm (L) (W) (H)	96W	Touch motion Manual switch function Stop on block Speed adjustable Group control Built-in Lithium battery Various control options Flexible super silent design Memory function Fabric rebound journey correction
	AC Five wires control magnetic levitation motor	AM95-1/100-ML-GP	1N.m	16cm/s	215.5×95×56mm (L) (W) (H)	96W	
	Built-in battery magnetic levitation motor	AM95-1/100-ES-E	1N.m	16cm/s	215.5×95×56mm (L) (W) (H)	96W	
AM68 Series	AC100-240V quiet motor	AM68-1/100-EQ-P	1N.m	16cm/s	316×68×53mm (L) (W) (H)	80W	Touch motion Manual Switch function Stop on block Speed adjustable Group control Third limit position Flexible super silent design Various control options Memory function Fabric rebound journey correction
	AC100-240V Flexible heavy duty motor	AM68-2/80-EM-P	2N.m	12cm/s	316×68×53mm (L) (W) (H)	65W	
	AC Line Switching quiet motor	AM68-2/80-EM-QP	2N.m	12cm/s	316×68×53mm (L) (W) (H)	65W	
	AC Roof curtain motor	AM68-2/80-EC-P	2N.m	12cm/s	316×68×53mm (L) (W) (H)	65W	
	AC Five wires quiet motor	AM68-1/100-EQ-GP	1N.m	16cm/s	316×68×53mm (L) (W) (H)	80W	
	AC Five wires flexible heavy duty motor	AM68-2/80-EM-GP	2N.m	12cm/s	316×68×53mm (L) (W) (H)	65W	
AM70Series	AC Flexible quiet motor	AM70-1/100-EQ-P	1N.m	16cm/s	Φ72.5×281.5(L)mm	96W	Touch motion Various control options Stop on block Memory function High voltage control Manual Switch function Flexible super silent design Speed adjustable Group control Fabric rebound journey correction
		AM70-2/80-EM-P	2N.m	12cm/s	Φ72.5×281.5(L)mm	72W	
	AC Line Switching flexible quiet motor	AM70-1/100-EQ-QP	1N.m	16cm/s	Φ72.5×281.5(L)mm	80W	
		AM70-2/80-EM-QP	2N.m	12cm/s	Φ72.5×281.5(L)mm	65W	

**Loading diagram**

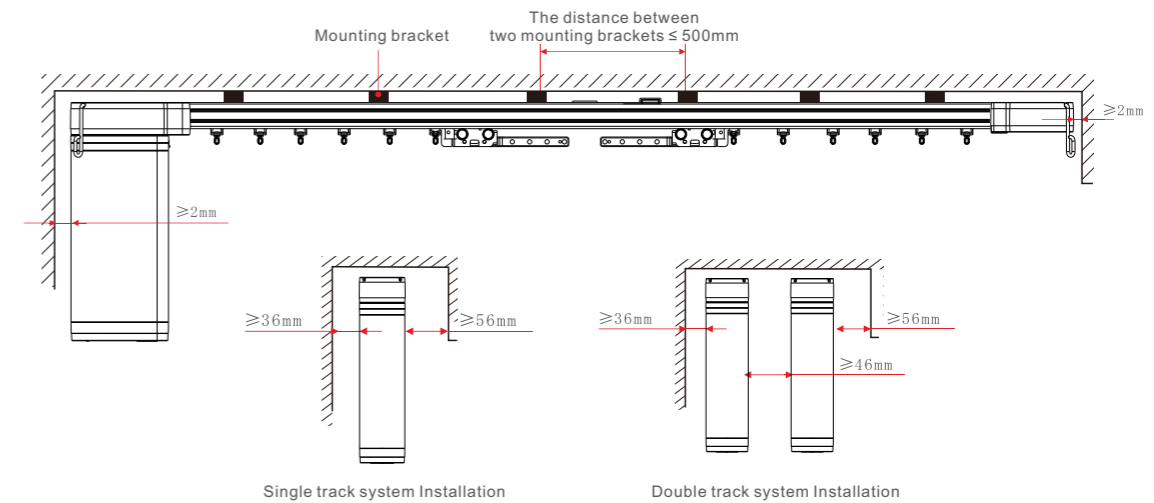
Single motor loading diagram	1N.m			2N.m			Double motor loading diagram	1N.m	2N.m
	Fabric weight	Track length	Track and pulley	Fabric weight	Track length	Track and pulley		12m	12m
Single motor with double pulley	4m	8m	12m	4m	8m	12m	Double motor with double pulley	90kg	135kg
Single motor with single pulley	50kg	45kg	40kg	75kg	67.5kg	60kg	Double motor with single pulley	70kg	105kg
Single motor with double pulley	45kg	40kg	35kg	67.5kg	60kg	52.5kg	Double motor with double pulley	60kg	90kg
Single motor with single pulley	40kg	35kg	30kg	60kg	52.5kg	45kg	Double motor with single pulley	50kg	75kg
Single motor with double pulley	35kg	30kg	25kg	52.5kg	45kg	37.5kg	Double motor with double pulley	40kg	60kg
Single motor with single pulley	30kg	25kg	20kg	45kg	37.5kg	30kg	Double motor with single pulley	30kg	45kg
Single motor with double pulley	31kg	21kg		46.5kg	31.5kg		Double motor with double pulley	30kg	34.5kg
Single motor with single pulley	21kg	16kg		31.5kg	24kg		Double motor with single pulley	23kg	23kg

Fabric weight=Weight per square meter\*Size (m<sup>2</sup>) x Fold rate.

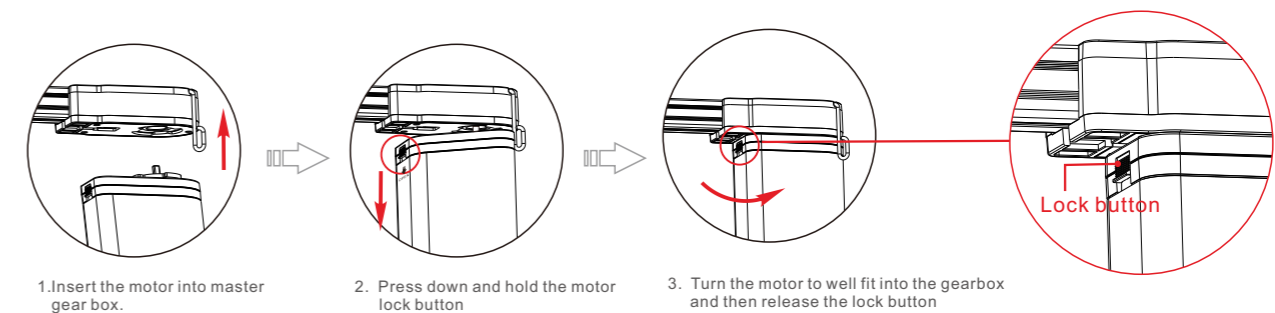
**Remarks:** Maximum loading weight in the diagram does not include friction between fabric and curtain track.

**AM95 Curtain Motor System Installation**

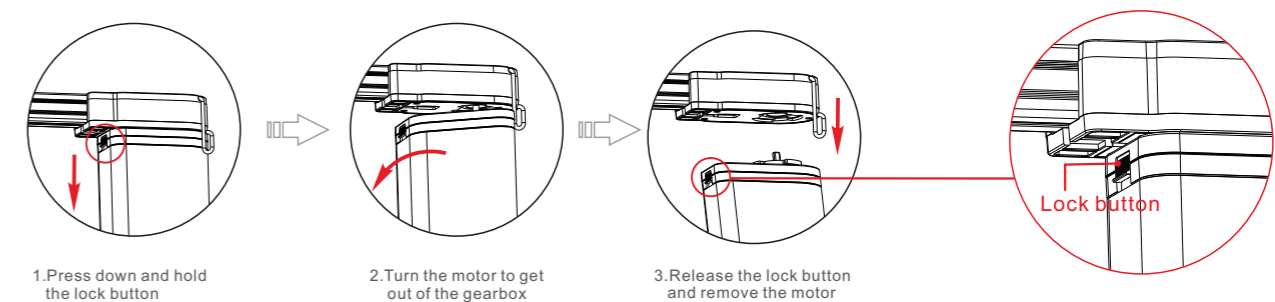
**Install the track**



**Install the motor**



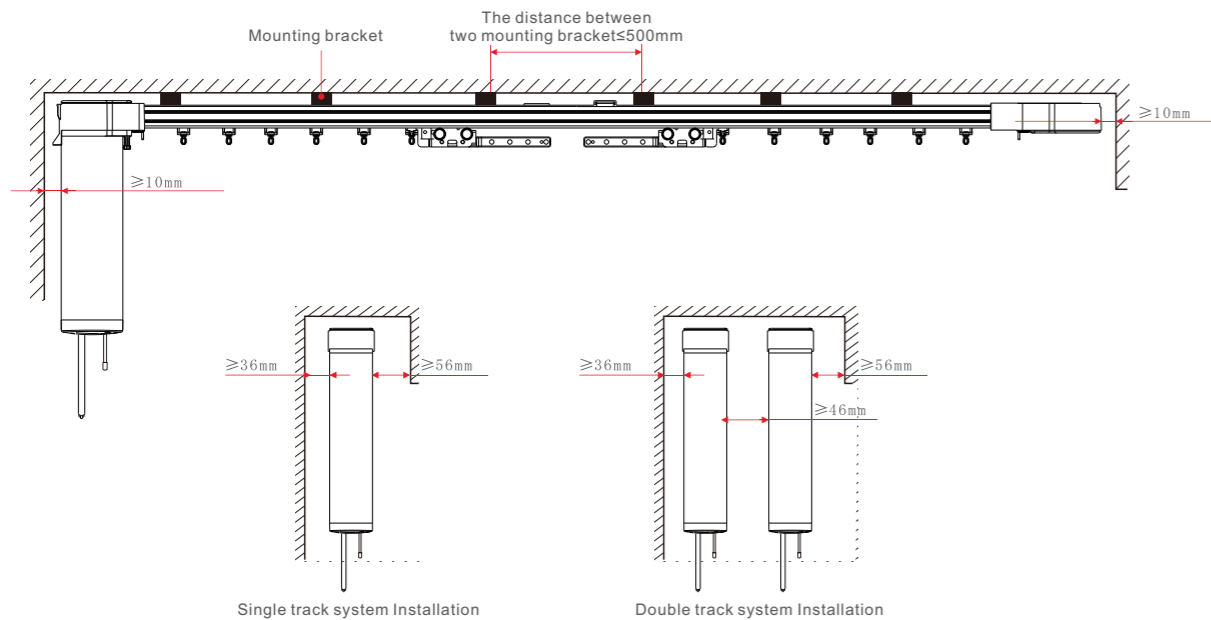
**Remove the motor**



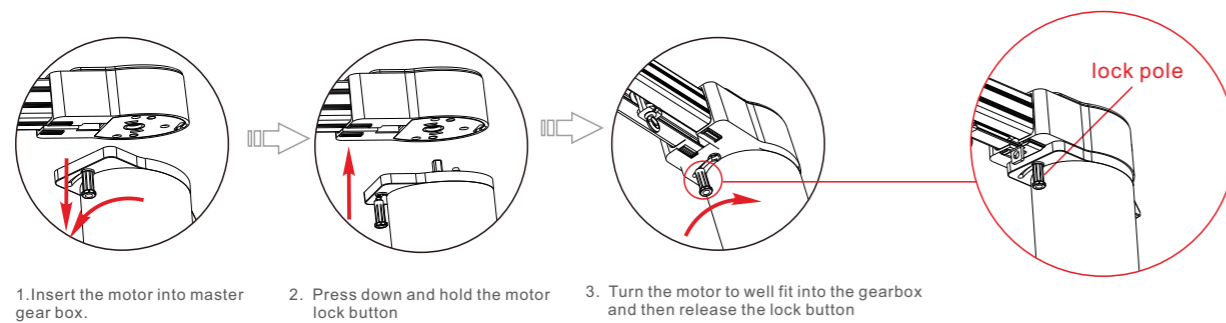


### AM68 Curtain Motor System Installation

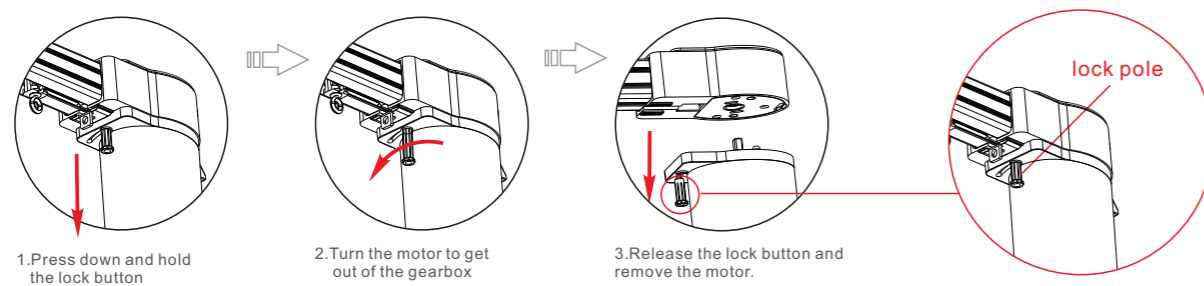
#### Install the track



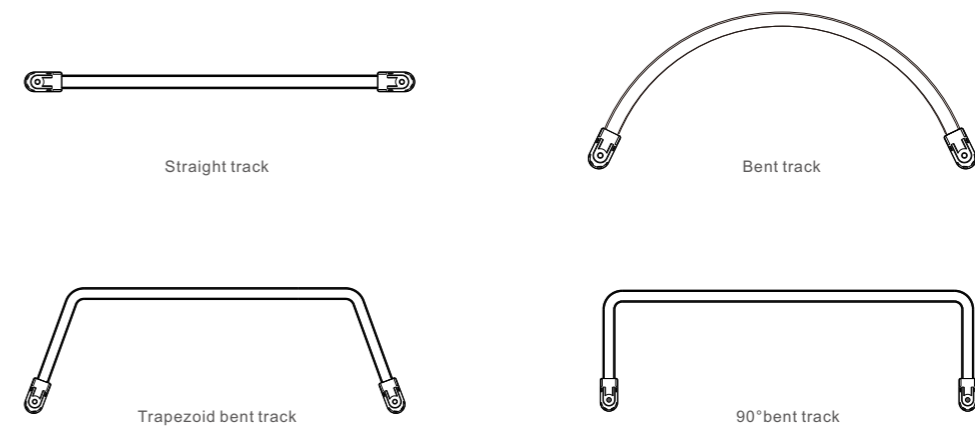
#### Install the motor



#### Remove the motor



### Track and Accessories



Remarks: Customized track is available according to customers requirement.

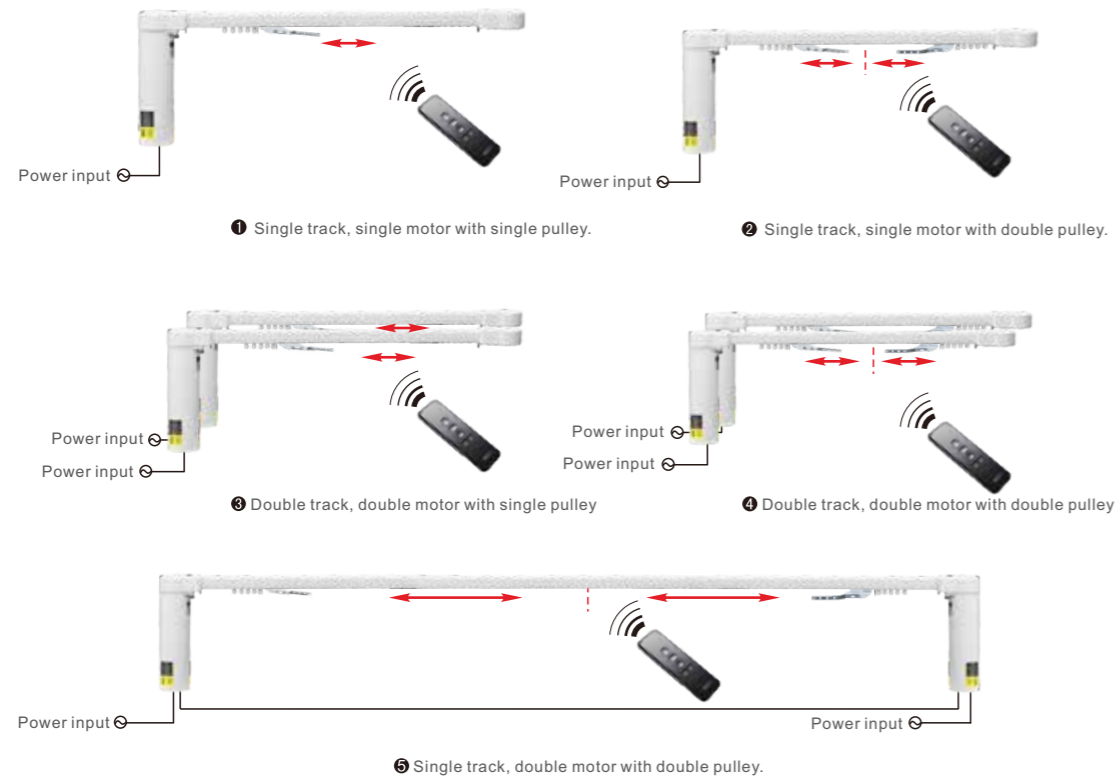
### Accessories

Product Name	Track	Belt	Pulley	Track connector	Splice	Fix holder
Product picture						
Product description	1.High precision molding aluminum. 2.Surface electrophoresis treatment, highly anti-oxidation. 3.Anti-friction design within the track. 4.Customized track is available according to customer's requirement.	1.Green belt with steel wire. Strong anti-aging performance and Non-deformation. 2.The system could last for 15000 times, as long as 20 years' service life (Two times a day).	1.Work with driving belt, silent structure design. 2.Imported high quality material, non-deformation, no color fading. 3.Hardware with electroplating treatment.	1.Hardware is made of anti-rust material. 2.Special designed screw design. 3.Uneasy to remove by unqualified workers.	1.It is used to connect two tracks, meet the demands of longer curtain track. 2.It is made of 304 stainless steel, high compressive strength and anti-rust.	1.It is made of 304 stainless steel, high compressive strength and anti-rust. 2.Humanized structure design, installation friendly.
Number of configuration	AM68 track length= Whole track length-150mm.	AM68 belt length=Track length*2+240mm.	One-way open and close with 1 Pulley, Two-way open and close with 2 Pulley.	It is used to connect two tracks.	It is used to connect two tracks.	1 complete track system comes with 2pcs fix holders.

Product Name	Concealed ceiling bracket	Single Track Bracket	Double Track Bracket	Gear box	Side hook	Carrier
Product picture						
Product description	1.Fix the track from the top to the bottom. 2.It is made of 304 stainless steel, high compressive strength and anti-rust. It is used to connect two tracks.	1.Surface electrophoresis treatment, highly anti-oxidation. 2.Suitable for double track installation, levelness is adjustable, can be adapted to different roughness of the cover, flexible installation.	1.Surface electrophoresis treatment, it is able to oxidation. 2.Suitable for double track installation, levelness is adjustable, can be adapted to different roughness of the cover, flexible installation.	1.Work with driving belt. 2.Use the imported special material, anti-fade. 3.Hardware use stainless steel material.	It is made of PC material. It is made of stainless material, high strength, extremely durable.	1.It is made of imported wear-resisting plastic, non-deformation, non-fading.
Number of configuration	2pcs for 1M track	2pcs for 1M track (20 cm from both ends)	2pcs for 1M track (20 cm from both ends)	1 complete track come with 2 pcs.	1 complete track come with 2 pcs.	1meter track come with 8 pcs.

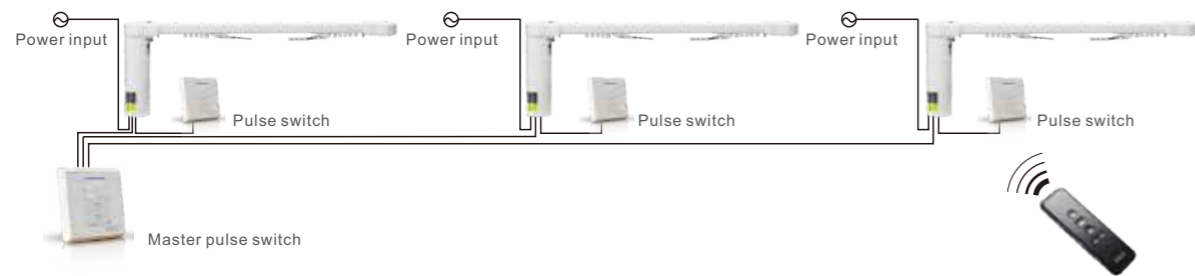
**Curtain Motor Control Mode**

**Single/ Double open and close combination**



**Control mode**

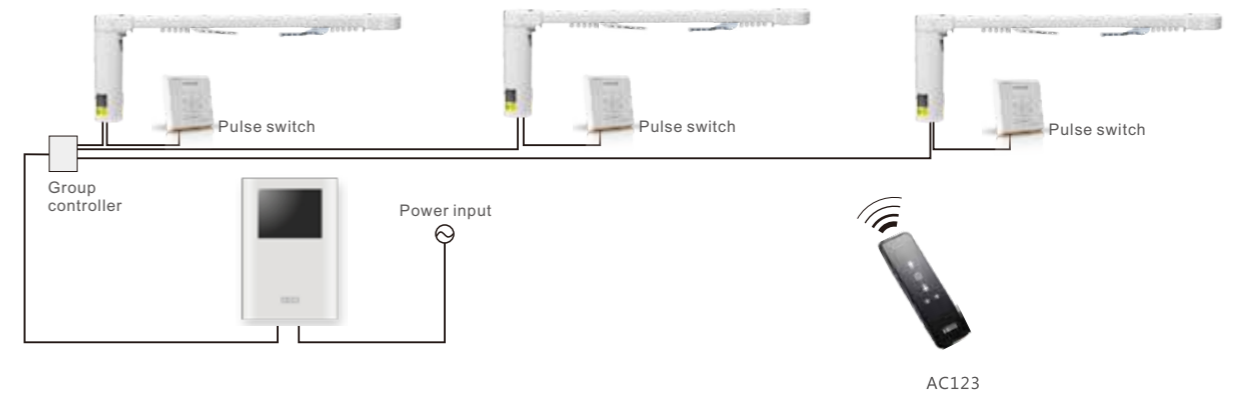
**W Solution for Switch/RF control in separate or group**



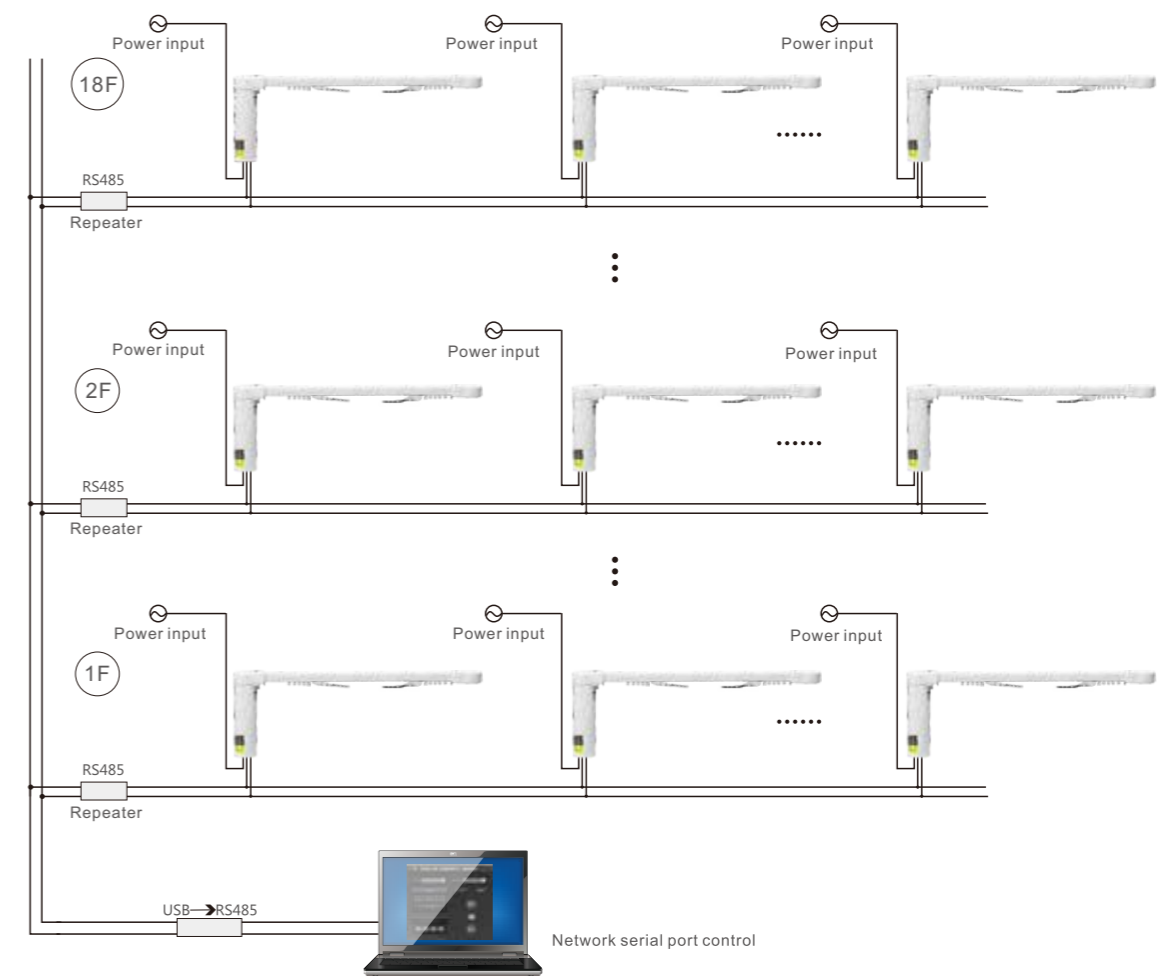
**RF control and group control system solution**



**AC Output Center Control Application---AC Line Switching Curtain Motor**



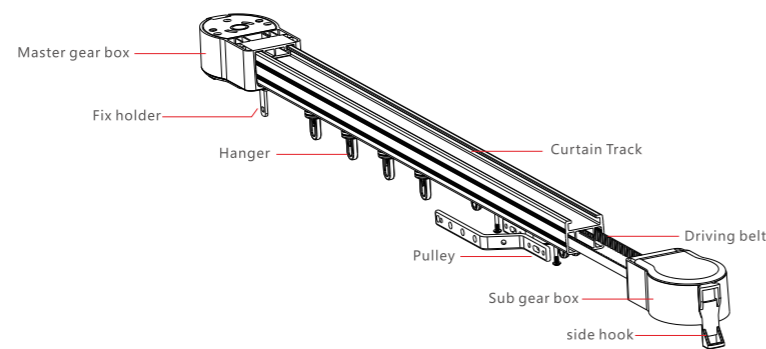
**Computer Control---curtain motor building control scheme**





## Curtain Motor System Assemble

### Curtain Motor System Diagram



### Assemble

#### Step 1: Cut Curtain Rail and Driving Belt

##### The length of AM68 completed rail calculation formula:

Rail length=completed rail length-150mm.  
Driving belt length= Rail length\*2+240mm.

For example: one 2m AM68 completed rail  
The length of cutting rail: 2000-150=1850mm, the length of cutting belt: 1850\*2+240=3940mm.

##### The length of AM95 completed rail calculation formula:

Rail length=completed rail length-160mm.  
Driving belt length= Rail length\*2+290mm.

For example: one 2m AM95 completed rail  
The length of cutting rail: 2000-160=1840mm, the length of cutting belt: 1840\*2+290=3970mm.

#### Notes:



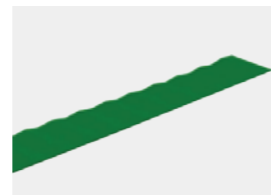
Cut and prepare rail  
PS: Please use professional cutting machine



Curtain rail sectional view  
PS: The cutting surface of curtain rail must be leveling; deburr the rail with a file to smooth the edges of the rail for ease of transportation and connection.



Cut driving belt  
PS: Please use professional cutting tool



Driving belt sectional view  
PS: please keep the cutting edges of the driving belt smooth.

#### Step 2: Please insert the driving belt into the curtain rail and go through the first gear box



Step 3: Place the gear box close to the curtain rail; please do not fix the gear box onto the rail; please keep the proper exposed driving belt and cut the ones. (AM68 completed rail: one side exposed 7 teeth space, another side exposed 8 teeth space; AM95 completed rail: one side exposed 9 teeth space, another side exposed 8 teeth space)



AM68 completed rail



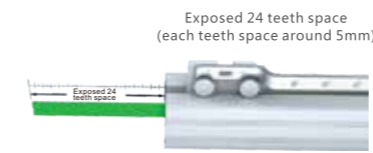
AM95 completed rail

Place the gear box close to the curtain rail; please do not fix the gear box onto the rail;

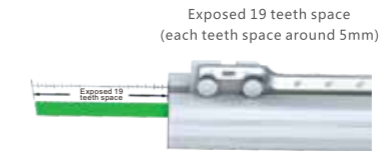


caution: the left side gear box must be installed firstly.

Step 4: Mark Edge of Driving Belt( if the curtain use two pulley, follow step 4 and step 5, if the curtain use only one pulley, skip step 4 and step 5)



AM68 Completed Rail

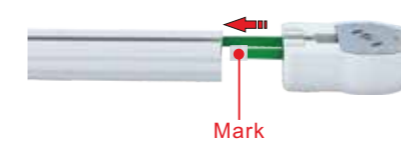


AM95 Completed Rail



Mark the driving belt on the edge of the rail

#### Step 5: Install two belt holder and pulley



1. Pull the gear box and install the first belt holder on the marked position; as above photo shown.



2. Install the second belt holder beside the first belt holder (one tooth space, on the left side), as above photo shown.



3. Assemble the pulley as above photo shown.

#### Step 6: Assemble another pulley



1. Insert the driving belt through the gear box.



2. Install the belt holder on the edge.



3. Assemble the sub carrier onto the belt holder.



4. Slide the sub carrier to master carrier, connect the master carrier and sub carrier.

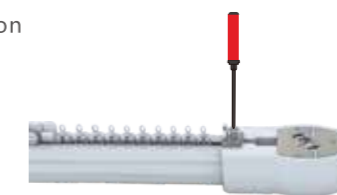


5. Assemble finished; two pulleys should stop in the middle of the completed rail.

#### Step 7: Hanger and fix holder installation



1. Insert the hangers as above image showed All hangers must face the same direction.



2. Lock the fixed holder.

#### Notes: Inspect the pulley sliding

1. Pull the pulley slightly; make sure the pulley slide smoothly.
2. Inspect the driving belt whether it is tight or loose.

If the pulleys do not slide smoothly, you could follow the assemble steps do some adjustment and you could also use some lubricating oil until the pulleys slide smoothly. Now you finish the completed rail assemble.